

CONFERENCE SERVICES



CONTENTS

2 ABOUT THE INSTITUTE

Location

Conference Facilities

Dining

Services

Activities

Accommodations

The Rockefeller Ethic in Action

Walks with the Governor

Tools for Respectful Dialogue

Institute Map

10 CONFERENCE SERVICES

Complete Meeting Package

Day Package

14 CONFERENCE ROOMS

② Show Barn Hall..... **15**

② Rock Theater **17**

② Petit Jean I **19**

② Petit Jean II **21**

② Governor's Conference
Room..... **23**

② Stables **25**

28 ACCOMMODATIONS

② President's Lodge **29**

② Meadows **31**

34 THE ARKANSAS ROCKEFELLER

Directions





ABOUT THE INSTITUTE

Our Mission

We continue Winthrop Rockefeller's collaborative approach to creating transformational change.

Our Vision

We envision a future where every person is empowered to bring their unique perspective to bear on the most monumental of challenges and participate in the search for solutions.

Our Method

We engage our resources and Winthrop Rockefeller's values to convene purposeful gatherings on his historic cattle ranch. We do this work by employing the **"Rockefeller Ethic"** which represents the belief that diversity of opinion, engaging in respectful dialogue, and practicing collaborative problem solving combine to create transformational change. The productive energy of our mountaintop location coupled with the highest levels of hospitality ensure all who come here are able to do their best work.





LOCATION

The Winthrop Rockefeller Institute sits atop beautiful Petit Jean Mountain, about an hour's drive from Little Rock, Arkansas. There are many attractions on Petit Jean for those wishing to enjoy Arkansas's natural beauty, including hiking trails, scenic overlooks, natural rock formations, Cedar Falls and Arkansas's first state park, Petit Jean State Park.



CONFERENCE FACILITIES

Each of our meeting spaces come with several seating-arrangement options. Audio/visual support is available for each space. The largest of our meeting rooms is the Show Barn Hall, which is adjacent to the Flagstone Foyer. Next largest is the Governor's Conference Room, followed by our two classroom-style meeting rooms, Petit Jean I and Petit Jean II. Also available is a meeting room in the Stables and the Rock Theater, which features stadium seating and a video wall display.



DINING

Our conference dining staff is skilled in serving groups of all sizes. We believe great food is a key part of having a great conference.

SERVICES

- ④ Complimentary Wi-Fi access
- ④ Serviced by UPS, FedEx and USPS
- ④ Audio/visual support as needed



ACTIVITIES

Institute Attractions

- Legacy Gallery
- Legacy Theater
- Scenic overlook from the Studio onto the Arkansas River Valley

Boathouse

Open April 1 - October 1

- Fishing
- Horseshoe pits
- Indoor basketball courts
- Indoor tennis courts
- Volleyball court

Fitness Center

- Men's & women's locker facilities
- Cardio & strength equipment
- Workout equipment
- Dry sauna
- Squash court
- Canoes & kayaks

Other Activities

- Baggo
- Bocce ball
- Board games
- Bicycles
- Fire pit
- Karaoke
- Movie on high-definition screen

ACCOMMODATIONS

The President's Lodge

Built in 2006, the President's Lodge is the newest lodging facility at the Institute. It features 30 guestrooms and a Great Room that is perfect for receptions and parties.

The Meadows

Renovated in 2012, the Meadows comprises 25 lodging rooms, each with a queen-size bed. Two of the rooms are suites: one suite has a living room, kitchen, and a king size bed; the other is a junior suite with an adjacent living room.

The Orchard

This facility has 10 lodging rooms, each equipped with a queen-size bed. There is a common kitchen, living room, and sun porch.

The Grove

The Grove includes eight fully furnished apartments. Four have one bedroom and the other four have two bedrooms; each bedroom has a queen-size bed. Each apartment has a refrigerator, stove, dishwasher, washing machine, and dryer.

Other Lodging

The Institute has a few 3 bedroom houses just off campus in the Pines. The total lodging capacity for the Institute is 100.

THE ROCKEFELLER ETHIC IN ACTION

The expertise of our Institute staff, trained to facilitate dialogue and encourage excellent group dynamics, can be utilized by conference guests while on the mountain.

WALKS WITH THE GOVERNOR

Leadership Development

A leadership development experience tying the life lessons that made Gov. Rockefeller such an influential leader to sites on his historic former cattle ranch. This “walk” (*guests will travel from site to site aboard an accessible bus*) through the Governor’s life and across his former homestead incorporates teambuilding dialogue exercises, personal reflection, and a close examination of why Gov. Rockefeller’s legacy is still impacting Arkansas today.

⌚ **Length:** 2.5 hours

⌚ **Fosters:** Leadership Development, Teambuilding

**Can accommodate groups of up to 15 people at a time*

TOOLS FOR RESPECTFUL DIALOGUE

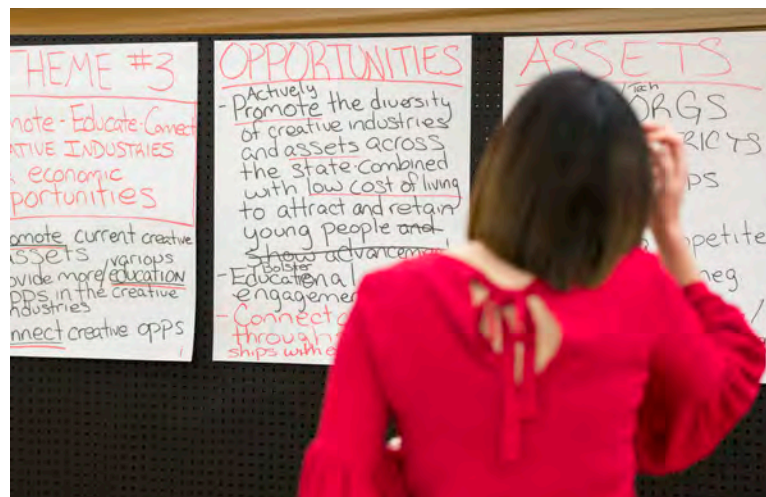
Building Mutual Respect

Healthy conflict, mutual understanding, and true collaboration are a struggle for many teams. The foundation for a culture where those goals are met are based in civility and, more importantly, dialogue. This session introduces tenants of civil discourse and provides the necessary tools to foster respectful dialogue when seeking solutions to complex issues.

⌚ **Length:** Approximately 90 minutes

⌚ **Fosters:** Collaboration, Communication
(*especially across differences*)

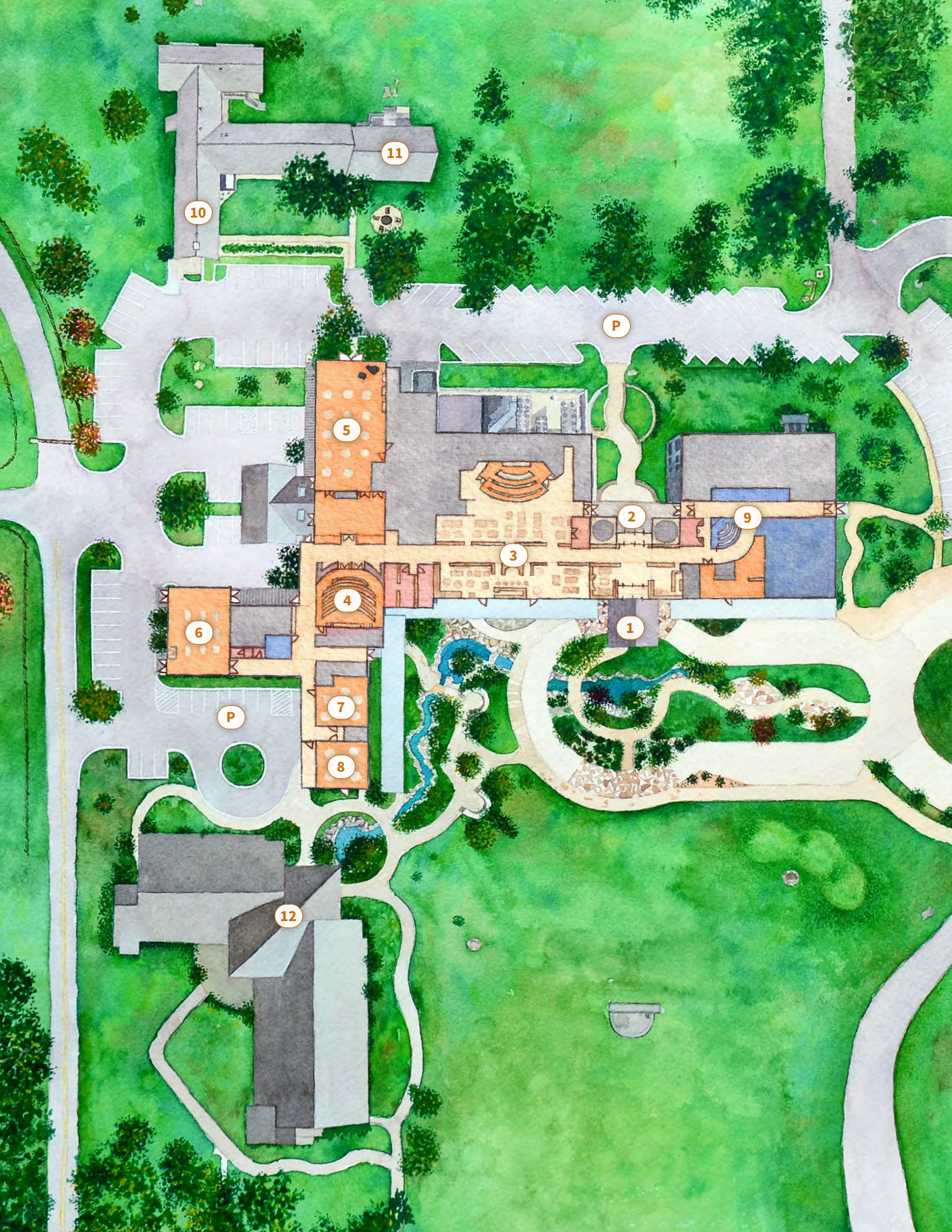
Please call conference services, (501) 727-6227, for pricing and availability for Walks with the Governor and Tools for Respectful Dialogue.

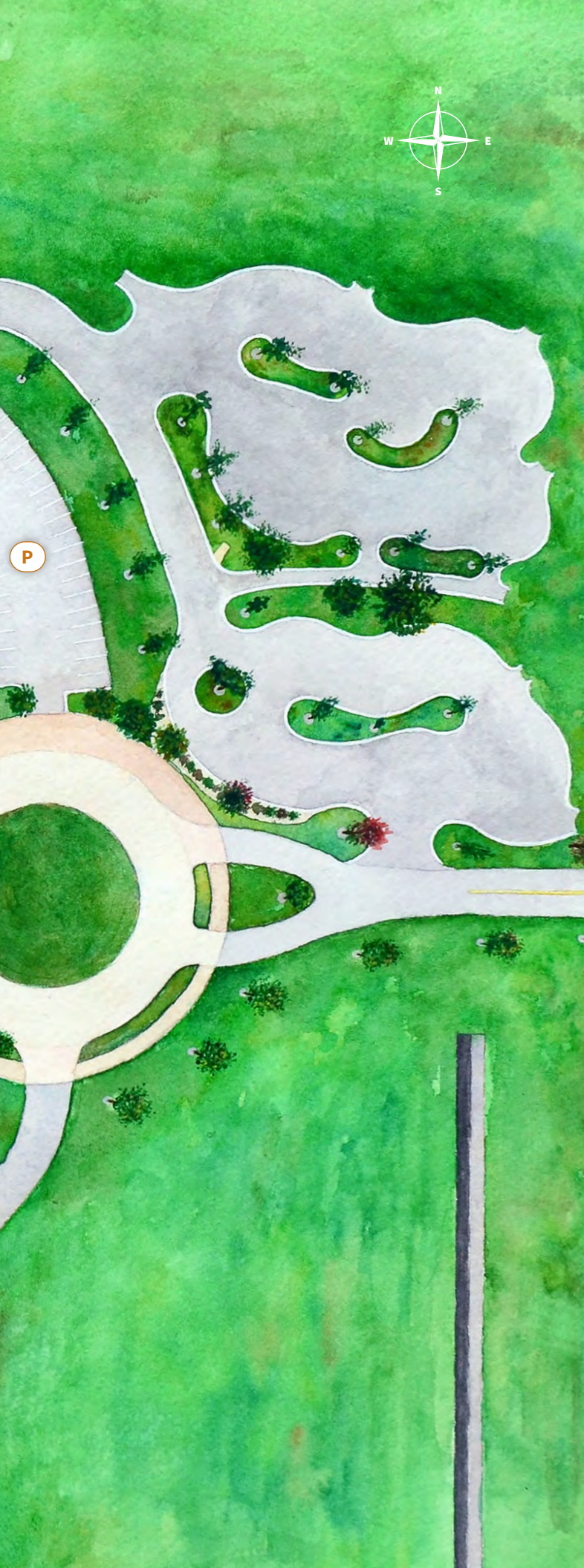


THEME #3
note - Educate, Connect
CREATIVE INDUSTRIES
economic
opportunities
promote current creative
assets
provide more education
opportunities in the creative
industries
connect creative opps

OPPORTUNITIES
- Actively Promote the diversity of creative industries and assets across the state combined with low cost of living to attract and retain young people and show advancement
- Educational engagement
- Connect through relationships with

ASSETS
TECH ORGS
POLICIES
PS
competite
neg
/





INSTITUTE MAP

Legend

1. Front Entrance
2. Back Entrance
3. Conference Dining
4. Rock Theater
5. Show Barn Hall
6. Governor's Conference Room
7. Petit Jean I
8. Petit Jean II
9. Legacy Gallery/Theater
10. The Meadows
11. Stables Classroom
12. President's Lodge
- P Parking

Trends:

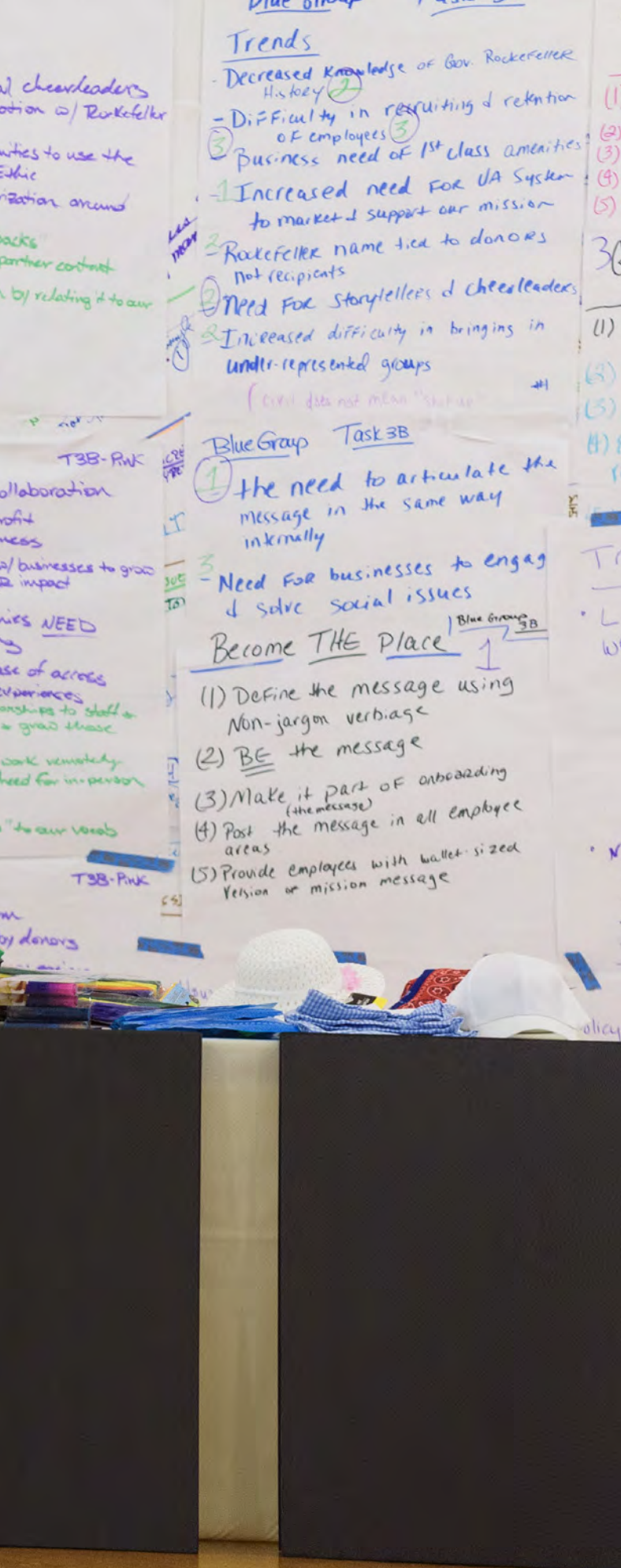
- Scale
 - 1 - More external
 - 2 - Cross-collaborations
 - 3 - Need for common Rockefeller E
 - 4 - Increased political issues
- 1 - Give countries 'strong p
- Increased sharing of
- 4 - Capitalize on globalization work

Partners

- Opportunities for c
b/w nonprofit & nonp
nonprofit & busi
- ~~Businesses~~ - Work
CS
- Some online compa
- person conveni
- businesses need ex
and amenities fo
- a specific relat
- staff to manage
- relationships
- many people who
- what they want
- convening
- Add more "tech spec

Position

- Devaluing of the term



CONFERENCE SERVICES

The Winthrop Rockefeller Institute is committed to maintaining the productive energy that was infused into our picturesque location when Winthrop Rockefeller moved here more than half a century ago. Our mission is centered around fostering meaningful dialogue that enhances human relations and improves the outlook for individuals, organizations, our state, and our country.

In support of these efforts, the Institute sets the standard when it comes to conference center events and team-building activities. We focus on your needs by specializing in small- to medium-sized meetings, conferences, and retreats.

Meeting Facilities & Meeting Planner Services

- ⊗ More than 17,000 square feet of meeting space
- ⊗ Renowned food service
- ⊗ Seven primary meeting and breakout rooms
- ⊗ Professionally trained on-site meeting managers
- ⊗ Audio/visual equipment
- ⊗ High-speed wired and wireless Internet
- ⊗ Business services (copy, fax, etc.)
- ⊗ Team-building experiences available for an additional cost

COMPLETE MEETING PACKAGE

Our full-service, all-inclusive package includes lodging and food service. Rates vary depending on your needs; contact us for assistance in pricing your event.

This Package Could Include

- ⌚ Buffet and/or plated meals
- ⌚ Facilitated group dialogue (*see page 5*)
- ⌚ Evening s'mores by the firepit
- ⌚ Cocktail reception overlooking the Arkansas River Valley

DAY PACKAGE

Our day package (*conference services for a day meeting without overnight accommodations*) is \$50 per person.

This Package Includes

- ⌚ Morning beverage station with snacks
- ⌚ Lunch
- ⌚ Afternoon beverage station with snacks
- ⌚ Conference service charges, which include the cost of the meeting room(s), A/V support, etc.









CONFERENCE ROOMS

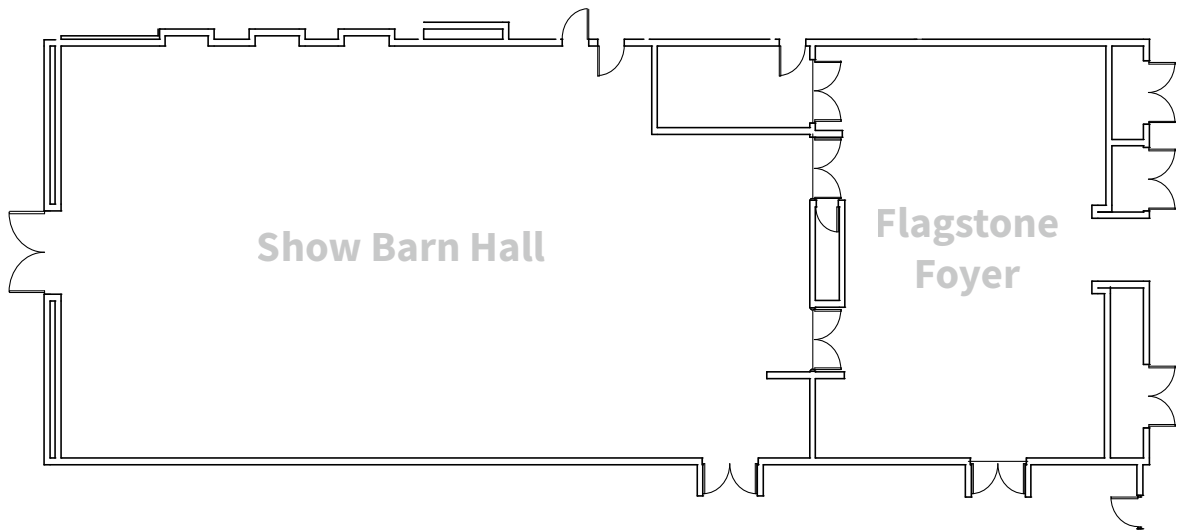
We have a variety of meeting spaces with a wide array of options for setup to meet your specific needs. Each room has unique advantages and can serve groups of varying sizes in different ways.

If you have an intimate convening of eight or would like over 100 people seated at tables, we can create the ideal environment for your group. One of our conference service representatives will be happy to share the myriad setup options with you.

SHOW BARN HALL

- ✓ **Dimensions:** 80' x 40'
- ✓ **Square Feet:** 3,280
- ✓ **Seating:** up to 250 (*theater style*)

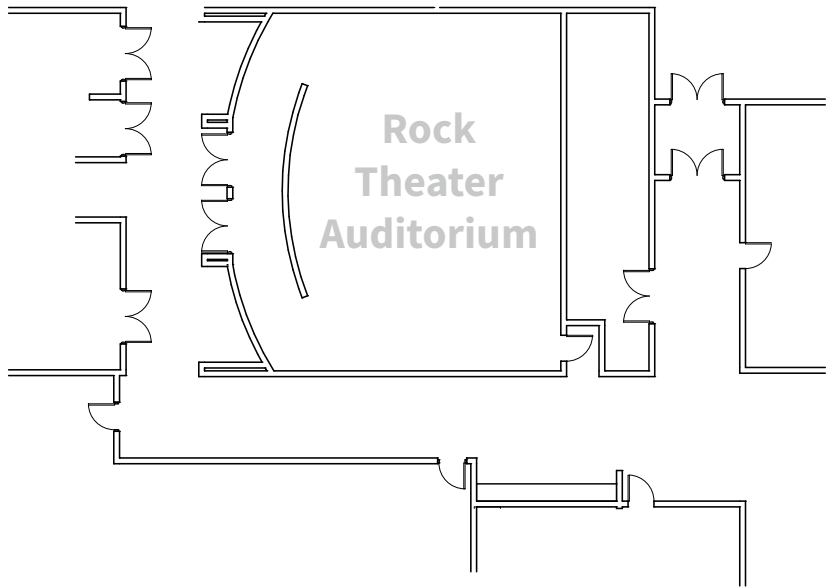




ROCK THEATER

- ✓ **Dimensions:** 40' x 35'
- ✓ **Square Feet:** 1,400
- ✓ **Seating:** up to 80
- ✓ **Video Call:** Full video call capabilities
- ✓ **Video Wall:** is 9 separate screens and can show multiple images (*video call, presentation slides, etc.*) simultaneously

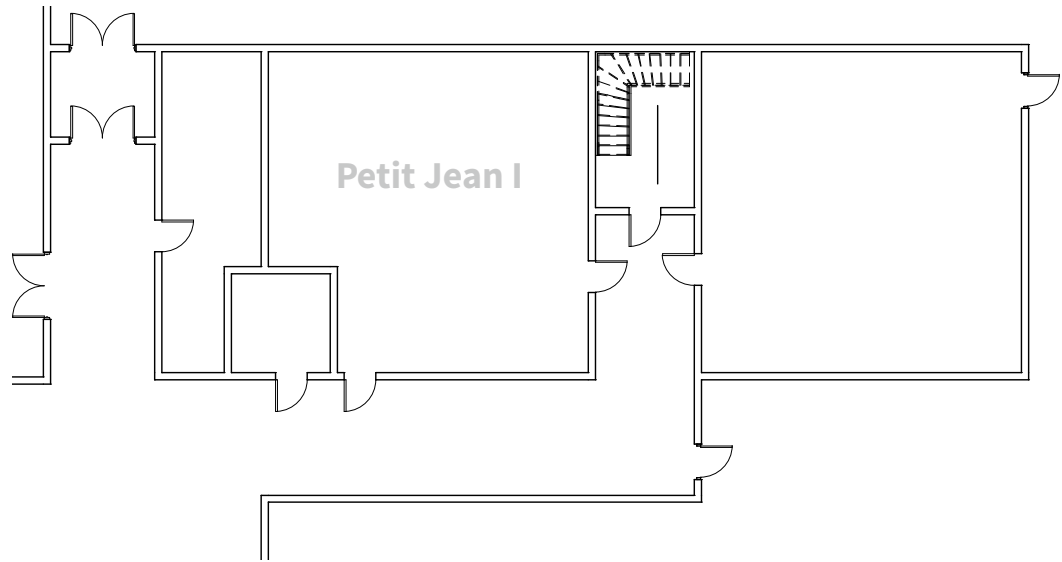




PETIT JEAN I

- ✓ **Dimensions:** 30' x 29'
- ✓ **Square Feet:** 870
- ✓ **Seating:** up to 66 (*theater style*)





PETIT JEAN II

- ✓ **Dimensions:** 30' x 30'
- ✓ **Square Feet:** 900
- ✓ **Seating:** up to 85 (*theater style*)

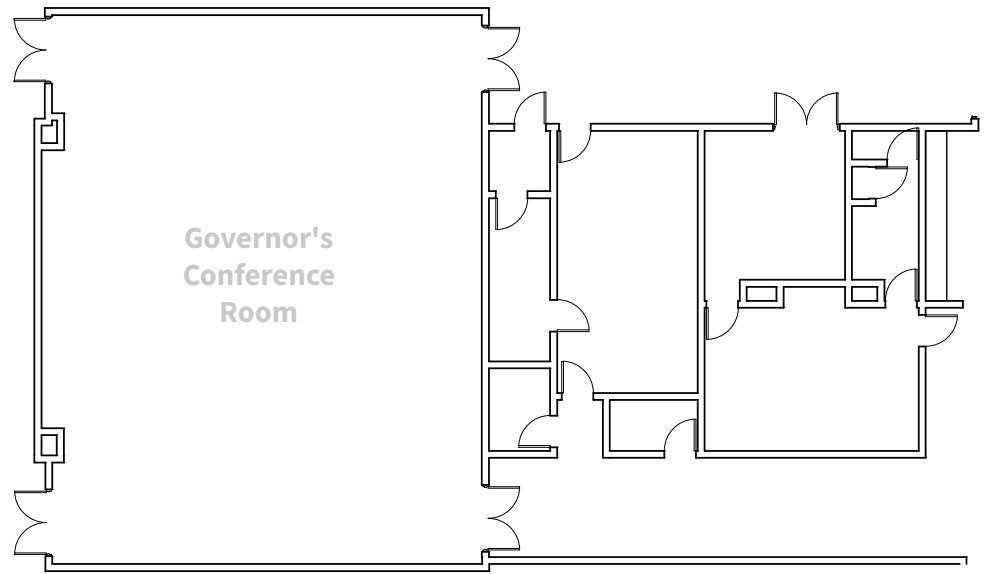




GOVERNOR'S CONFERENCE ROOM

- ✓ **Dimensions:** 50' x 38'
- ✓ **Square Feet:** 2,040
- ✓ **Seating:** up to 116 (*theater style*)

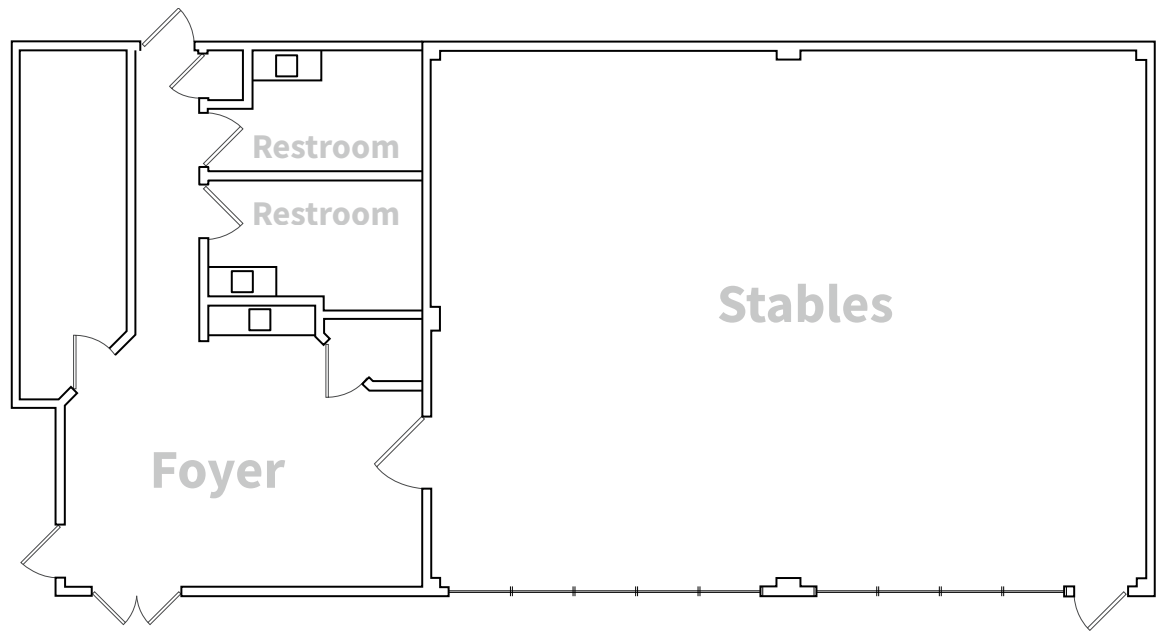




STABLES

- ✓ **Dimensions:** 40' x 30'
- ✓ **Square Feet:** 1,200
- ✓ **Seating:** up to 88 (*theater style*)







1100
REGISTRATION



ACCOMMODATIONS

The President's Lodge is our newest lodging facility, comprising 30 guestrooms and the President's Lodge Great Room. The Meadows includes 25 lodging rooms, two of which are suites. Between the President's Lodge and the Meadows, we offer four Americans with Disabilities Act-compliant rooms. Other lodging options include guestrooms with a common living area in the Orchard, apartments in the Grove, and houses in the Pines.

PRESIDENT'S LODGE

- ⌚ free Wi-Fi
- ⌚ single-cup pod coffee maker
- ⌚ shampoo & conditioner
- ⌚ hair dryer
- ⌚ iron
- ⌚ mini-fridge
- ⌚ 32-inch flat-screen TV

Information about other lodging options can be obtained by asking your conference services representative.



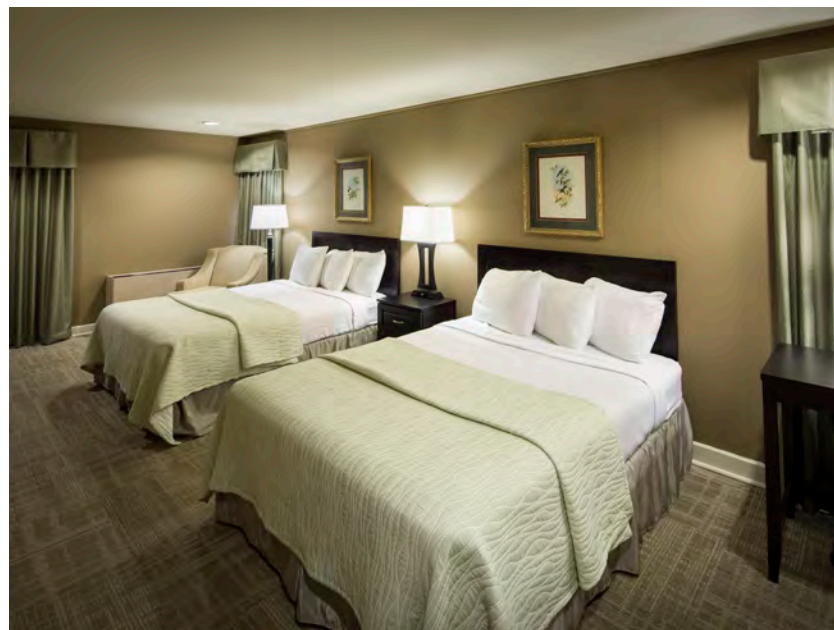


MEADOWS

- ④ free Wi-Fi
- ④ single-cup pod coffee maker
- ④ shampoo & conditioner
- ④ hair dryer
- ④ iron
- ④ mini-fridge
- ④ 32-inch flat-screen TV

Information about other lodging options can be obtained by asking your conference services representative.









THE ARKANSAS ROCKEFELLER

After serving in World War II and trying his hand at the family business both in the oil fields of Texas as a roughneck and as a businessman in New York and eastern Europe, Winthrop Rockefeller moved to Arkansas in 1953 and began a new phase of his life.

In the 20 years he lived on Petit Jean Mountain, Gov. Rockefeller hosted more than 200 conferences and meetings. These convenings addressed an astonishing range of concerns – from educational needs and rural economic development, to cleaning up Arkansas’s political system and improving race relations. Rockefeller’s meetings on the mountain, attended by state and national leaders, provided a necessary spark to improve public and private sector policymaking.

The Winthrop Rockefeller Institute exists to live out the Governor’s legacy through the Rockefeller Ethic by inviting those with differing viewpoints to come together in respectful dialogue, solving problems collaboratively to create positive change and lasting impact becomes transformational change.

Every citizen has the duty to be informed, to be thoughtfully concerned, and to participate in the search for solutions. ”

– Winthrop Rockefeller

DIRECTIONS

Google Maps is most reliable when needing directions to our campus. For directions, simply visit rockefellerinstitute.org/directions.

Please call the front desk at **(501) 727-5435** if you need assistance.





WINTHROP
ROCKEFELLER
INSTITUTE
UNIVERSITY OF ARKANSAS SYSTEM
WELCOME

The image shows a large, dark grey rock monument with a large, stylized 'R' logo on the left. The text 'WINTHROP ROCKEFELLER INSTITUTE UNIVERSITY OF ARKANSAS SYSTEM WELCOME' is engraved on the rock. The monument is surrounded by a low stone wall and colorful flowers. In the background, there are tall pine trees under a blue sky with scattered clouds. A small, dark, rectangular object is visible on the right side of the rock.



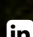


Reach Out

Petit Jean Mountain
1 Rockefeller Drive
Morriston, AR 72110

 (501) 727-5435
 rockefellerinstitute.org

Be Social

 [rockefeller.institute](https://www.facebook.com/rockefeller.institute)
 [rockefellerinstitute](https://www.instagram.com/rockefellerinstitute)
 [rockefeller](https://twitter.com/rockefeller)
 [rockefellerinstitute](https://www.linkedin.com/company/rockefellerinstitute)